

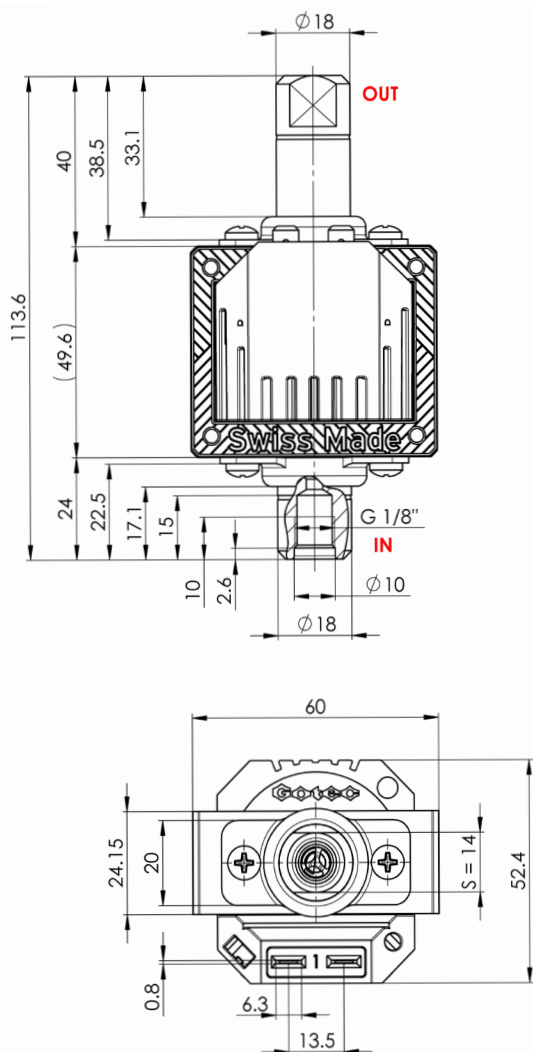
SOLENOID PUMPS

ETG50

TECHNICAL DATA



DIMENSIONS



NOMINAL RATED DATA

Pressure (no flow)	≥ 5 [bar]
Open flow	≥ 80 [l/h]
Viscosity range	1...600[mm ² /s]
Filter	Mesh 100
Voltages	230[V] (24, 110V)
Frequencies	50, 60[Hz]
Electrical connection	2 x 6.3 x 0.8 [mm]
Power	45[W]
Weight	~560[g]
Temperature	1...50[°C]
Insulation	Class H Class 2
	100% ED / 20 [°C]

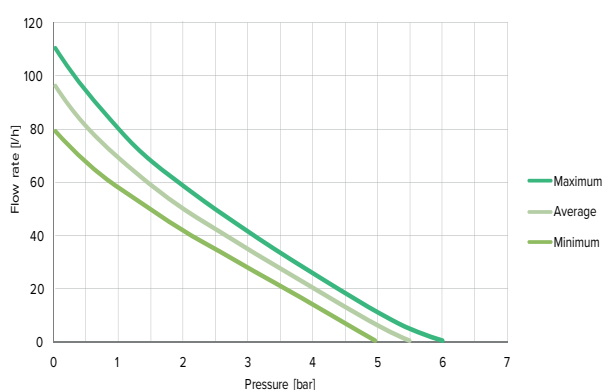
SOLENOID PUMPS

ETG50 230V

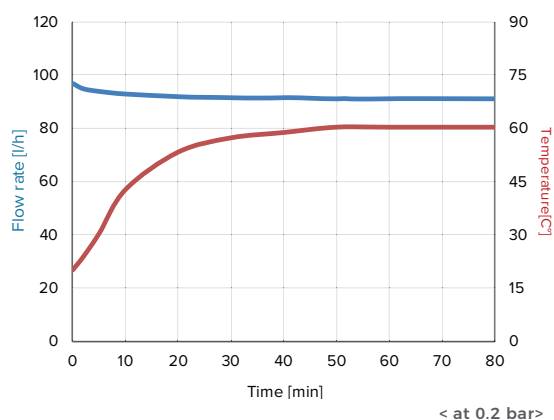
TECHNICAL
DATA



PERFORMANCES

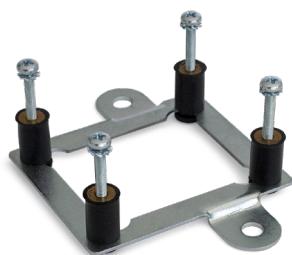


FLOW RATE & TEMPERATURE



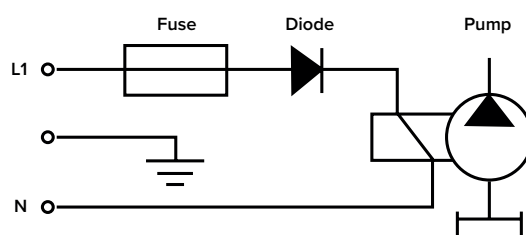
Tested with 20°C of water at ambient temperature

ACCESSORIES



Mounting plate

ELECTRIC WIRING DIAGRAM



Large choice of materials & options

Please refer to instruction manual for more installation details. For more information, visit our website : www.gotec.ch

Certifications



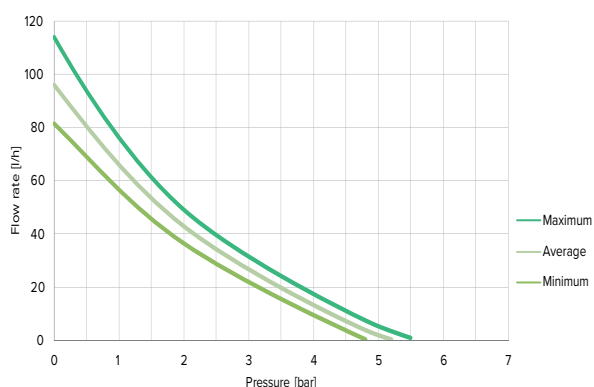
SOLENOID PUMPS

ETG50 24VAC

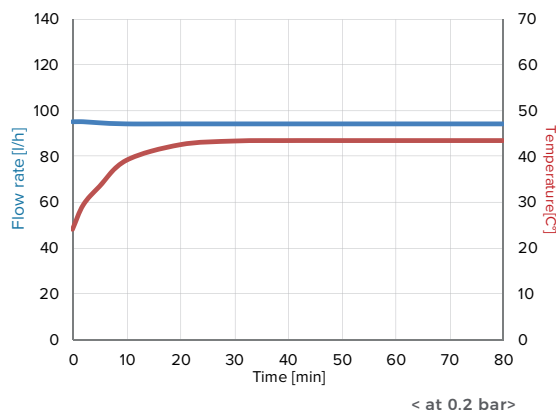
TECHNICAL
DATA



PERFORMANCES

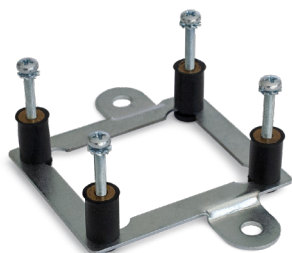


FLOW RATE & TEMPERATURE



Tested with 20°C of water at ambient temperature

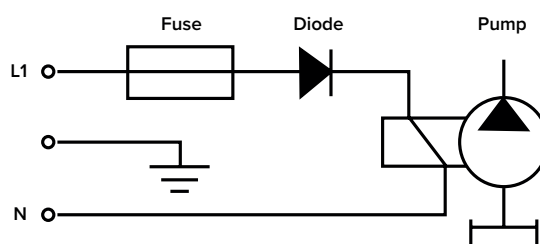
ACCESSORIES



Mounting plate

Large choice of materials & options

ELECTRIC WIRING DIAGRAM



Please refer to instruction manual for more installation details. For more information, visit our website : www.gotec.ch

Certifications

