

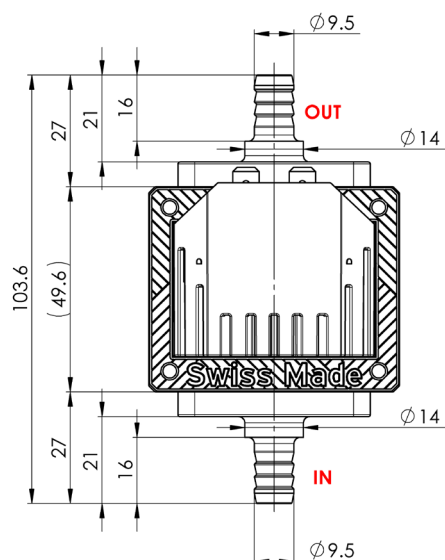
**SOLENOID PUMP**

# ETS17

**TECHNICAL DATA**



## DIMENSIONS



## NOMINAL RATED DATA

Pressure (no flow)	≥ 1.8[bar]
Open flow	≥ 130[l/h]
Viscosity range	1...600[mm <sup>2</sup> /s]
Filter	Mesh 100
Voltages	230[V] (24, 110V)
Frequencies	50, 60[Hz]
Electrical connection	2 x 6.3 x 0.8 [mm]
Power	40[W]
Weight	~450[g]
Temperature	1...50[°C]
Insulation	Class H Class 2
	100% ED / 20 [°C]

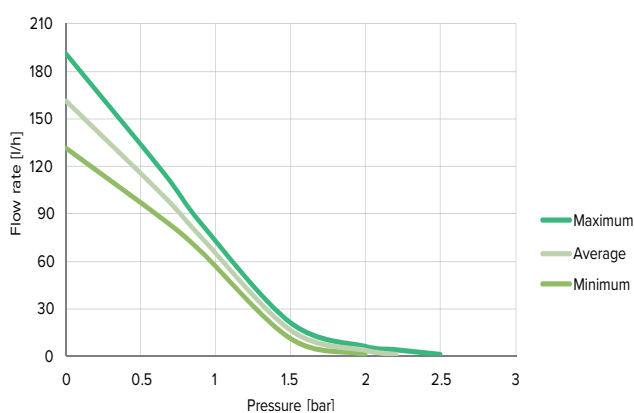
SOLENOID PUMP

**ETS17 230V**

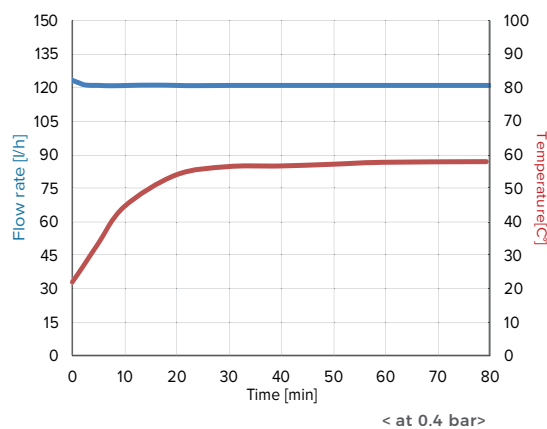
TECHNICAL DATA



PERFORMANCES

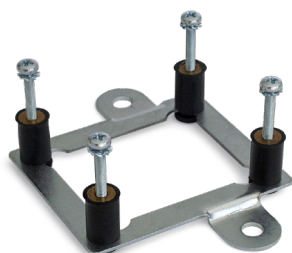


FLOW RATE & TEMPERATURE



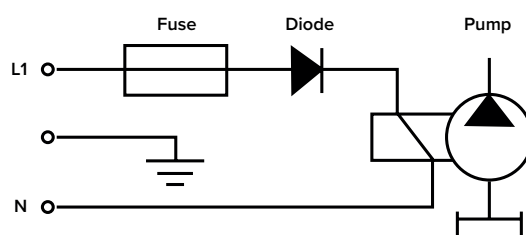
Tested with 20°C of water at ambient temperature

ACCESSORIES



Mounting plate

ELECTRIC WIRING DIAGRAM



Large choice of materials & options

Please refer to instruction manual for more installation details. For more information, visit our website : [www.gotec.ch](http://www.gotec.ch)

Certifications



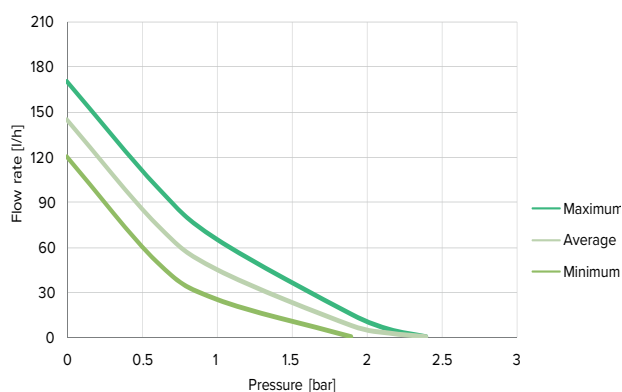
**SOLENOID PUMP**

# ETS17 24VAC

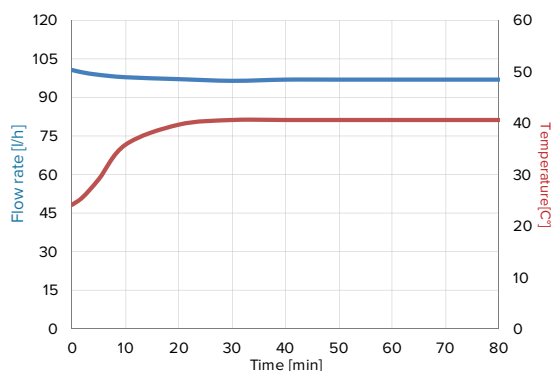
**TECHNICAL DATA**



## PERFORMANCES



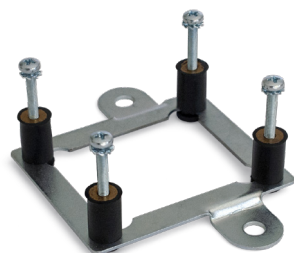
## FLOW RATE & TEMPERATURE



< at 0.4 bar >

Tested with 20°C of water at ambient temperature

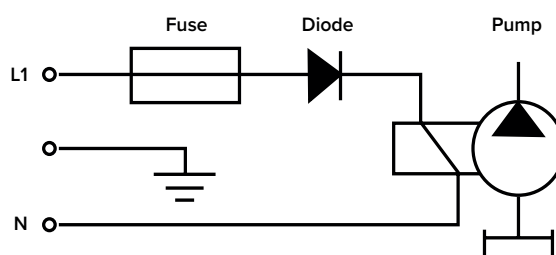
## ACCESSORIES



Mounting plate

Large choice of materials & options

## ELECTRIC WIRING DIAGRAM



Please refer to instruction manual for more installation details. For more information, visit our website : [www.gotec.ch](http://www.gotec.ch)

### Certifications





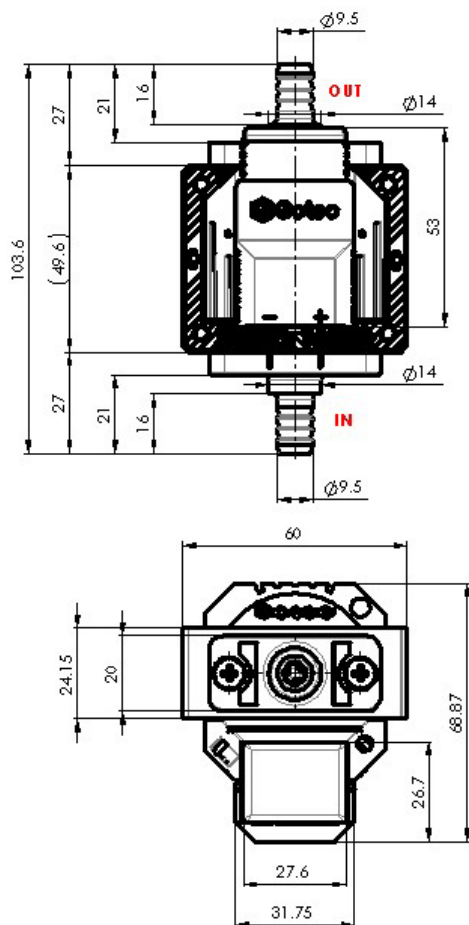
SOLENOID PUMP

# ETS17 24VDC

TECHNICAL  
DATA



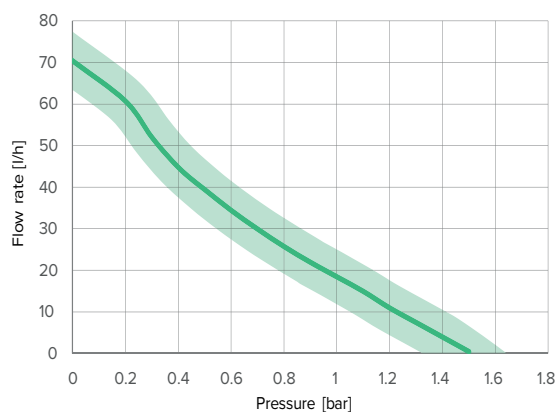
## DIMENSIONS



## DESCRIPTION

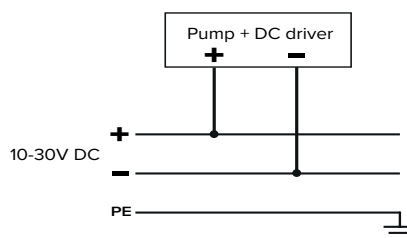
Pump is built with a DC driver to operate with DC voltage. This electronic converts DC voltage into a pulsed signal; the value of frequency and duty cycle are fixed to create the best performances of the pump. The flow can be adjusted via input voltage between 10 to 30 VDC.

## PERFORMANCES



Tested with 20°C of water at ambient temperature with 24VDC

## ELECTRIC WIRING DIAGRAM



Please refer to instruction manual for more installation details. For more information, visit our website : [www.gotec.ch](http://www.gotec.ch)

### Certifications

